

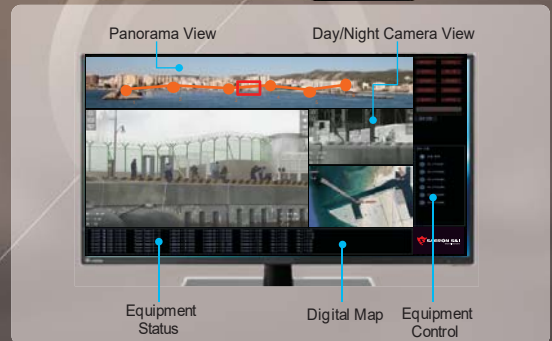
SR-P400

SR-P400 Long Range Thermal PTZ Camera



■ Main Feature

- Dual Video Monitoring
- Digital Map/Panorama Monitoring
- Fog/Image Stabilization
- Point Scan/Group Monitoring
- Radar Interlocking
- Pan/Tilt Angle, Zoom Display on Map
- BIT(Built In Test) Feature



Day Color Camera

- HD Zoom Lens/HD Camera



Boat

32X/60x Zoom

SWIR Camera

- SWIR, 0.4 ~ 1.7 um
- 400mm Zoom Lens
- High Resolution 640x480

Laser Range Finder

- Detection 10 km, Vehicle
- 1,570nm, Eye Safe(Class-1M)
- Accuracy : ±5m



Thermal Camera

- Cooled MWIR, 3~5um
- Continuous Zoom/Auto Focus : FOV 1.3° ~ 25.1°
- High Resolution : 640x480
- 1280x1024 HD (Optional)



Color Pallet

B/W

- Image Stabilization
- BIT (Built In Test)
- GPS & Digital Compass(Optional)
- Fog Image Enhancement(Optional)
- Auto Detection & Tracking (Option)

■ Thermal Camera



Made In Korea

■ Auto Video Tracker



Color Human Tracking

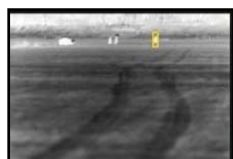


Fast Move Object

■ Color Camera



HD Zoom



Thermal Human Tracking



Thermal Boat Tracking



SR-P400

Long Range Thermal PTZ Camera



	ITEM	SR - P400	SR - P400HD
Thermal Camera*	Sensor	Cooled, 3 to 5 μ m	Cooled, 3 to 5 μ m
	Resolution	640 x 480	1280x720 (or 640 x 480)
	Focal Length	35~690mm Continuous	75~1000mm Continuous
	F Number	f/4.0	f/4.0
	Field of View	15.2 ~ 0.8°	14.6 ~ 1.1°
	Digital Zoom	1x to 2x Digital Zoom	1x to 2x Digital Zoom
	Pixel Pitch	15 μ m	15 μ m
	NETD	\leq 17 mK	\leq 25 mK
	Video Format	NTSC/PAL	NTSC/PAL
	Frame Rate	60 Hz (30 fps)	60 Hz (30 fps)
	Focus System	Auto Focus	Auto Focus
	Color Variation(Palette)	10 colors (Grey,Iron, Rain/Yellow /MidGrey/Fire/BlueRed)	10 colors (Grey,Iron, Rain/Yellow /MidGrey/Fire/BlueRed)
	Image Processing:	AGC, Level&Span, NUC, Mirror Flip, Invert, Image Filter on Screen Menu	AGC, Level&Span, NUC, Mirror Flip, Invert, Image Filter on Screen Menu
	Detection Range** Human Target NATO Target	17.6km 23km	26km 47km
Recognition Range** Human Target NATO Target	6.3km 11.9km	7.2km 19.2km	
Color Camera (Full HD CMOS Zoom Camera)	Sensor Type	1/2 inch CMOS	1/2 inch CMOS
	Image Resolution	1920(H) x 1080P(V), 1280 X 720P	1920(H) x 1080P(V), 1280 X 720P
	Focal length	15.2 ~ 500 mm(32x) (1000mm Available)	16.7 ~ 1000 mm(60x) (2000mm Available)
	FOV	H 25.6°(Wide) ~ 0.81°(Tele)	H 22.3°(Wide) ~ 0.14°(Tele)
	Image Processor	White Balance Auto	White Balance Auto
Controller (Option)	Controller Type	Panel Mount Controller	
	Display	10.2" Touch LED	
	Interface	RADAR, GPS, Ethernet, RS232/RS422	
	Features	Built-In-Test, Stabilization Select Real-Time Monitoring, Network Control	
Gimbal	Size (WxD)	720(W) x 720(D) mm	720(W) x 750(D) mm
	Height	580 mm	600 mm
	Weight:	< 60 kg	< 70 kg
	Pan Range Tilt Range	360° continuous -60° +60°	
	Max Speed	Pan : 30°/s, Tilt : 15°/s	
	Power Requirement	12-34 VDC, 500 W or less	
	Operating Temperature	-30°C to + 70°C	
	Environmental Rating	MIL-STD-810, MIL-STD-461, IP66	
	Gyro (Optional)	2 Axis Gyro Stabilization System	