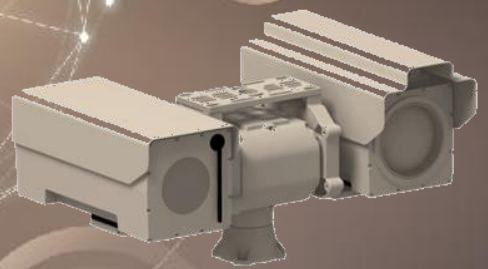


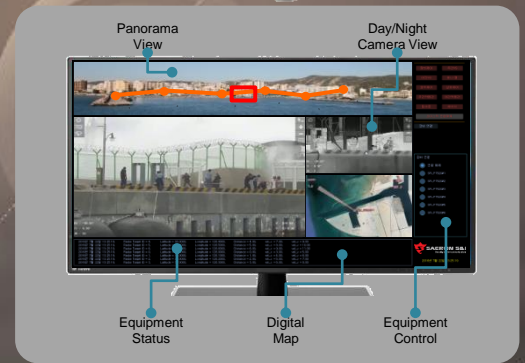
# SR-P400

## Long Range Thermal PTZ Camera

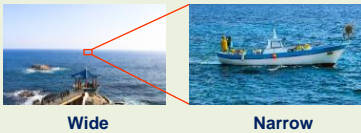


### Main Feature

- Long Range Day/Night Surveillance
- Heavy Duty Pan / Tilt System
- Point Scan/Group Monitoring
- BIT and Warning System
- Fog Enhancement Feature
- Target Automatic Tracking
- Radar Interlocking



- Long Range D/N Camera
  - Continuous Zoom/Auto Focus
  - : FOV 0.23° ~ 13.5°
  - High Resolution : 1920x1080P

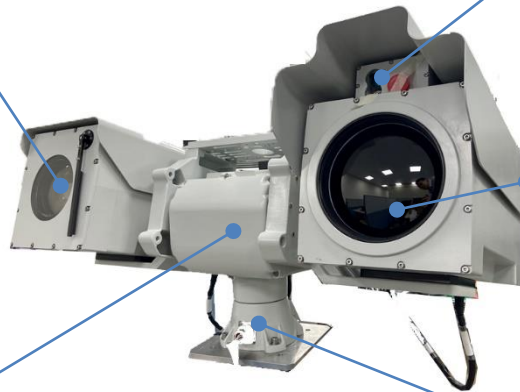


- Laser Range Finder
  - Detection 10 km, Vehicle
  - 1,570nm, Eye Safe(Class-1M)

- Thermal Camera
  - Cooled MWIR, 3~5um
  - Continuous Zoom/Auto Focus
  - 690mm, FOV 15.2° ~ 0.8°
  - High Resolution : 640x480



- Pan/Tilt System
  - Azimuth : N x 360°
  - Tilt : +60~-60°
  - Accuracy : < 0.1°
  - MIL-STD-810, MIL-STD-461
  - Gyro Stabilizer(Optional)
  - GPS & Digital Compass(Optional)



- Video Auto Tracking(Optional)
  - Thermal & Color Camera Tracking
  - Radar Interlock Tracking

### Thermal Camera



Made In Korea

### Auto Video Tracker



Color Human Tracking

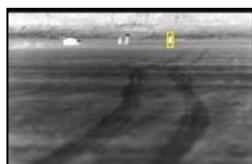


Fast Move Object

### Color Camera



HD Zoom Lens



Thermal Human Tracking



Thermal Boat Tracking



# SR-P400

Thermal Camera

## Long Range Thermal PTZ Camera



ITEM	SR-P400	
Thermal Camera	Spectral Range:	Cooled, 3 to 5 $\mu\text{m}$
	Resolution:	640 x 512
	Focal Length:	35 to 690mm
	F Number:	f/4.0
	Field of View:	15.2 ~ 0.8°
	Optical Zoom:	19x
	Digital Zoom:	8x
	Pixel Pitch:	15 $\mu\text{m}$
	NETD:	$\leq 17$ mK typical (Without Lens)
	Video Format:	NTSC/PAL
	Frame Rate:	60 Hz (30 fps)
	Focus System:	One-Shot Auto / Motorized Manual
	Image Processing:	Noise Reduction, Edge Enhancement, Sharpness, AGOC, AGC, AOC, AGC ROI
	Detection Range Human Target* NATO Target**	17.6 km 23 km
	Recognition Range Human Target* NATO Target**	6.3 km 11.9 km
Color Camera (Full HD CMOS Zoom Camera)	Sensor Type	1/2 inch CMOS
	Image Resolution	1920(H) x 1080P(V), 1280 X 1024, 1280 X 960, 1280 X 720P
	Focal length	16 ~ 880mm, Auto Focus 55x Optical Zoom
	FOV	H 26°(Wide) ~ 0.5°(Tele) / V 15°(Wide) ~ 0.3°(Tele)
	Detection Range** Human : NATO Target :	17km 23km
	Recognition Range** Human : NATO Target :	7km 12km
Laser Range Finder	Laser wavelength	1.5 $\mu\text{m}$ , eyesafe
	Detection Range	10km for 2.3x2.3m Nato Target
	Measurement Rate	0.2, 1, 4, 10 Selectable
	Accuracy	0.5 ~ 1.5m
Physical/Operation	Dimension	720(W)x720(D)x550(H)mm
	Weight	60 kg
	Pan Range Tilt Range	360° continuous -60° ~ +60°
	Max Speed	Pan : 0~30°/s, Tilt : 0~15°/s
	Power Requirement	22-34 VDC, 500 W
	Gyro (Option)	Gyro Stabilization(Pitch & Yaw)
	Operating Temperature:	-32°C to +55°C
	Environment	MIL-STD-810G
	Auto Tracking (Optional)	Auto Video Tracking