

# Real Time Panorama Camera **SR-PN360D**



## Main Feature

- Dual video system : Thermal and Color
- FOV 360°x45° monitoring
- Six 1920x720 Pixel Color Imager
- Six 640x480 Pixel Thermal Imager
- Rugged and Militarized Product



ITEM	SUB	PERFORMANCE
Visible (Day)	Sensor Type FOV Spectral Band	CMOS Image x 6 360° H x 45° V 0.4 um ~ 0.7 um
Thermal (Night)	Sensor Type FOV Spectral Band	640x480 VOx microbolometer x 6 360° H x 45° V 7.5 um ~ 13.5 um
Power	Power requirements Power consumption	12 to 32 VDC 28 W Nominal
Physical	Dimensions Weight	267 x 106 x 213 mm (10.5 x 4.2 x 8.4 in) 15.7 kg
Video Output	Color Image Ch Thermal Image Ch	Ethernet, RTSP Protocol Ethernet, RTSP Protocol
Interface	Command and Control Image display	RS-422 or Gigabit Ethernet Real time on PC or dedicated monitor
Environment	Operating temp Storage temp	-32°C to 55°C (-25.6°F to 131°F) -50°C to 65°C (-58°F to 149°F)
Option	Basic Unit Display Package	Video output direct to three (3) displays for high resolution 180° display Single custom display with Image Stitching

## Applications



Military Vehicle



EOD Monitoring



# Panorama Camera System

## Main Feature

- 360° Surround Monitoring
- Dual video Monitoring – Thermal and CMOS
- Image Edge Blending
- Real Time Wide Panorama Monitoring
- Rugged and Militarized Product



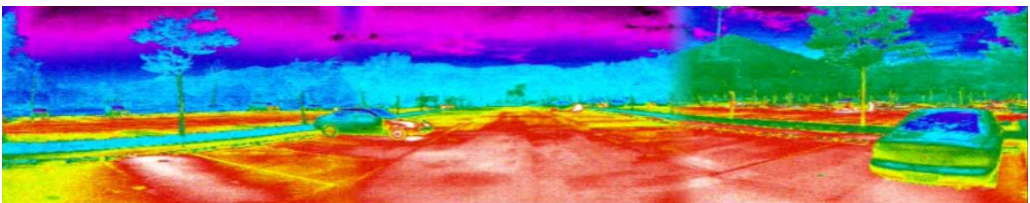
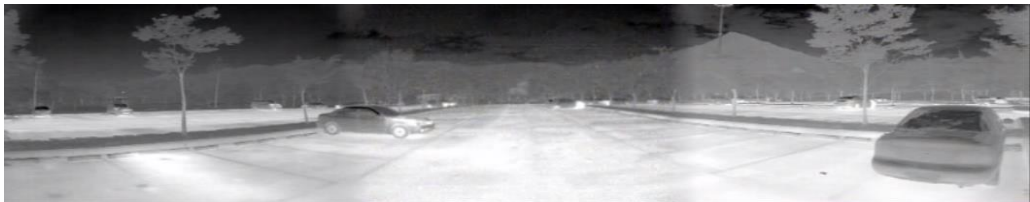
360° Panorama Camera



180° Front & 60° Rear  
Panorama Camera



## Edge Blending



Edge Blending & Image Fusion Technology