

Stabilized Gimbal Thermal Camera (EO/IR Camera)

SR-Z200

- Thermal Camera
 - Various Lens Selectable
 - Digital Zoom
 - High Resolution : 640×480 Pixels



Color Pallet



B/W

- Laser Range Finder (Option)

- HD Color Camera
 - 32x Motor Zoom Camera
 - Autofocus

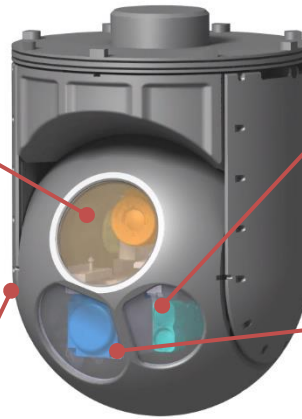


Wide



Narrow

- Gyro Motion Stabilization
- BIT (Built In Test)
- Video Auto Tracker (Option)
- GPS & Digital Compass(Option)

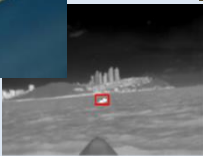


■ Main Feature

- Dual Camera Monitoring
- Marine Environment Proven
- Full HD Color Zoom Camera
- High Quality Thermal Camera
- High Performance Gyro Stabilization
- Auto Tracker / Detector(Option)
- Image Stabilization(Option)
- IPx6 Harsh Environment

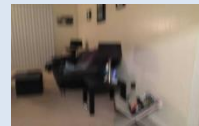
Video Auto Tracking

Auto Tracking Feature for UAV and Boat



Mounted on UAV

Onboard Video Processor



Digital Image Stabilizer



Anti Fog



On Screen Display



Video Fusion

■ Application



Ship



Coast Guard



UAV

Stabilized Gimbal Thermal Camera **SR-Z200**

ITEM	SR-Z200MW	SR-Z200LW
Thermal Camera*	MWIR	LWIR
Spectral Range:	Cooled, 3 to 5 μm	Uncooled, 8 to 14 μm
Resolution:	640 x 480	640 x 480
Focal Length:	20 ~ 275mm, Optical Zoom	25mm Typical (18mm, 35mm, 50mm, 100mm Available)
F Number:	f/5.5	f/1.0
Field of View:	27.4° ~ 1.9°	24.6° for 25mm lens
Digital Zoom:	2x & 4x Digital Zoom	2x & 4x Digital Zoom
Pixel Pitch:	15 μm	17 μm
NETD:	≤ 25 mK	≤ 50 mK
Video Format:	NTSC/PAL	NTSC/PAL
Frame Rate:	60 Hz (30 fps)	60 Hz (30 fps)
Focus System:	Auto Focus	Motorized Focus
EO Color Camera		
Sensor Type	1/2.8 inch CMOS	
Image Resolution	1920(H) x 1080P(V)	
Focal length	30x Optical Zoom, 12x Digital Zoom	
Laser Range Finder(Optional)		
Laser wavelength	1.5 μm , eyesafe	
Detection Range	10km for 2.3x2.3m Nato Target	
Accuracy	1 ~ 1.5m	
Controller(Optional)		
Joystick	PTZ control	
Display:	LED Display	
Buttons:	Stabilization Mode Select, Tracking Engagement	
Interface:	RADAR, GPS, Ethernet, RS232/RS422	
Gimbal		
Diameter	200 mm	
Height	270 mm	
Weight:	5 kg or less	
Pan Range : Tilt Range :	360° continuous -30° +90°(Mechanical)	
Max Speed:	Pan : 60°/s, Tilt : 30°/s	
Power Requirement:	12-34 VDC, 100 W or less	
Operating Temperature:	-30°C to +55°C	
Environmental Rating:	IPx6	
Gyro:	4 Axis Gyro Stabilization System (2 Axis Option) + Digital Image Stabilization	