

Marinized Electro-Optic Tracking System

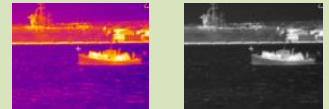
SR-Z300M

- Laser Range Finder
- SWIR Camera (Option)
- Search Light (Option)

- HD Color Camera
 - 30x Motor Zoom Camera
 - Autofocus



- Thermal Camera
 - Various Lens Selectable
 - 15~100mm Optical LWIR
 - MWIR (Option)
 - High Resolution : 640x480Pixels



Color Pallet

B/W

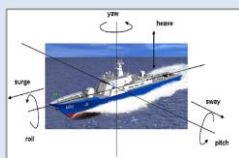
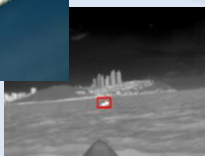
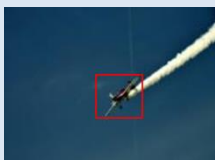
- Gyro Motion Stabilization
- BIT (Built In Test)
- Video Auto Tracker (Option)
- GPS & Digital Compass(Optional)

■ Main Feature

- Dual Camera Monitoring(Color/Thermal)
- Video Tracking & Radar Tracking
- Fire-Fighter Mode
- Fire Fighting Software including Thermal Heat Data & Isothermal Graph
- High Performance Gyro Stabilization
- Marine Environment Proven
- Image Stabilization
- IPx6 Harsh Environment

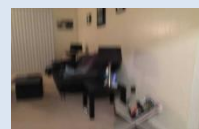
Stabilization & Video Auto Tracking

Auto Tracking Feature for UAV and Boat



Gyro Motion Stabilization

Onboard Video Processor



Digital Image Stabilizer



Anti Fog



On Screen Display



Video Fusion

■ Application



Ship



Coast Guard



USV

Marinized Electro- Optic Tracking System

SR-Z300M

ITEM	SR-Z300MHD	SR-Z300MC	SR-Z300M
Thermal Camera*	HD MWIR	SD MWIR	LWIR
Spectral Range:	Cooled, 3 to 5 μm	Cooled, 3 to 5 μm	Uncooled, 8 to 14 μm
Resolution:	1280x720	640 x 512	640 x 512
Focal Length:	15 ~ 300mm, Optical Zoom	20 ~ 275mm, Optical Zoom	15 ~ 100mm, Optical Zoom
F Number:	f/4	f/5.5	f/1.4
Field of View:	37.6° ~ 1.9°	27.4° ~ 1.9°	42.2° ~ 6.2°
Digital Zoom:	2x & 4x Digital Zoom	2x & 4x Digital Zoom	2x & 4x Digital Zoom
Pixel Pitch:	10 μm	15 μm	17 μm
NETD:	\leq 38 mK	\leq 25 mK	\leq 50 mK
Video Format:	NTSC/PAL	NTSC/PAL	NTSC/PAL
Frame Rate:	60 Hz (30 fps)	60 Hz (30 fps)	60 Hz (30 fps)
Focus System:	Auto Focus	Auto Focus	Auto Focus
Detection Range** NATO Target :	18km	15km	6km
Recognition Range** NATO Target :	8km	6km	1.7km
EO Color Camera			
Sensor Type	1/2.8 inch CMOS		
Image Resolution	1920(H) x 1080P(V)		
Focal length	30x Optical Zoom, 12x Digital Zoom		
SWIR Camera (Option)			
Spectral Range:	700 to 1700nm		
Resolution:	HD(1280x1024) or VGA(640x512) Selectable		
Lens :	Fixed FOV lens 25, 50, 100mm Selectable		
Frame Rate:	60 Hz (30 fps)		
Laser Range Finder(Optional)			
Laser wavelength	1.5 μm , eyesafe		
Detection Range	10km for 2.3x2.3m Nato Target		
Accuracy	1 ~ 1.5m		
Controller(Optional)			
Joystick	PTZ control		
Display:	LED Display		
Buttons:	Stabilization Mode Select, Tracking Engagement		
Interface:	RADAR, GPS, Ethernet, RS232/RS422		
Gimbal			
Diameter	250 mm		
Height	380 mm		
Weight:	15 kg or less		
Pan Range :	360° continuous		
Tilt Range :	-30° +90°(Mechanical)		
Max Speed:	Pan : 60°/s, Tilt : 30°/s		
Power Requirement:	12-34 VDC, 100 W or less		
Operating Temperature:	-30°C to +55°C		
Environmental Rating:	IPx6		
Gyro:	2 Axis Gyro Stabilization System (3 Axis Stabilization - Option)		

* Thermal Camera may be replaceable with various focal length

** Range depends on whether condition 50% probability

Marinized Electro-Optic Tracking System

SR-Z300M

SR-Z300 is equipped with a high-performance Cooled thermal imaging zoom camera or Uncooled thermal imaging zoom camera and Full HD/4K color zoom camera. It is an automatic video tracking camera with high performance 2-axis gyro motion stabilization, and 3-axis gyro motion stabilization is available as an option. It is a high tech rugged day & night camera system which has proven performance and durability mounted on small/medium sized patrol boats and unmanned surface boats. It is also possible to support the automatic orientation function by interworking with systems such as RADAR, LIDAR or AIS mounted on a ship.

